



UA4T



UA2

Electric Bulb Brooders - 2 Models

Model UA2 Single Bulb Brooder. For up to 100 chicks. Steel safety guard. Aluminum reflector (10" diameter or 25.4 cm). 110 V. 2 lb. (.9 kg) ship weight.

Model UA4T Four Bulb Brooder. For up to 350 chicks. Controlled thermostatically. One or four heating. One bulb always stays on and the other three are lit as required. This design saves energy. Galvanized steel reflector (14" diameter or 35.6 cm). Galvanized steel strap stand. 110 V. 6 lb (2.7 kg) ship weight.

On both models, bulbs not included, but we offer:

Model RLB Red Bulb and Model CLB Clear Bulb, both 250 watt.

Wafers & Switches

Wafers (Thermostat Wafers). Two styles. Both 3" (7.6 cm) diameter, 10-32 thread.

Model 31W has a threaded, reversible adapter. For most electric and gas brooders. Wt. 6 ozs. (171 grams).

Model 2W has a solid button on one side and an internally threaded post on the other side. For Brower 845 and 846 incubators and for Wards and Sears incubators. Wt. 6 ozs. (171 grams).

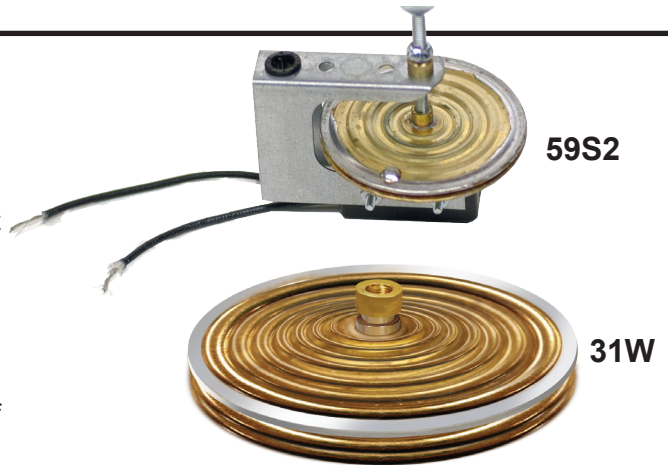
Temperature range of all wafers: 70-110° F (21-43° C).

Model 59S Electric Snap-Action Thermostat Switch

Thermostat switch, accurate, dependable, no interference. Dustproof molded plastic case. Shipped with No. 31W wafer. Easy to install. Mounting bracket. 2 1/2" (6.35 cm) x 3" (7.6 cm) with screws. Wt. 9 ozs. (257 grams).

Model 59S2 Incubator Switch

Same as 59S but with 2W incubator wafer. Wt. 9 ozs. (257 grams).

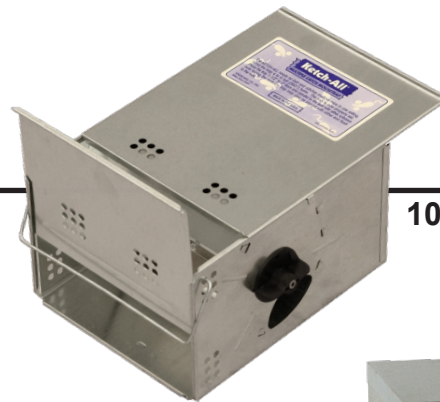


59S2

31W

Mouse Trap

Model 1010001. Completely automatic way of catching and disposing of mice without having to touch them. Easy to set...one winding of handle sets trap to catch 15 to 18 mice. Mice enter holes inside of trap, spring trap lever and are pushed into holding compartment...alive. Entire trap may be dipped in pail of water to destroy mice. No poisons, no dangerous traps to set...just wind it up and come back tomorrow. Size: 7" (17.8 cm) W x times 9" (22.9 cm) L x 5 1/2" (14.0 cm) H. Weight 4 lbs. (1.8 kg).



1010001

Rugged Pet Feeders - 2 Models

Galvanized steel. No sharp edges. Feed bowl designed to prevent waste. Notched back for optional wall mounting. Fully assembled. 1 Pack.

Model DF25

Holds approx. 25 lbs. (11.4 kg); 12 1/2" W x 11" I x 23" H (31.8 cm x 27.9 x 58.4); 11 lbs. (5 kg) ship weight.

Model DF50

Holds approx. 50 lbs. (22.7 kg); 16 1/2" W x 11 1/2" I x 28" H (41.9 cm x 29.2 x 71.1); 17 lbs. (7.7 kg) ship weight.



DF25

DF50